

HOMOGENEOUS CORK TILE FLOORING: Install Guide

1. PREPARATION

Heated Subfloors

The temperature of the subfloor **must not exceed 28°C (82°F)**. For detailed information, follow the instructions supplied by the subfloor heating system manufacturer/contractor, or contact your supplier. The floor surface temperature **must not exceed 20-22°C (68-72°F)**. Note that rugs or mats placed on top of the floor may function as heat accumulators and will increase the floor surface temperature more than the maximum recommended.

Any heated subfloor has certain working conditions, depending on the heating system and the subfloor. Norms and rules concerning installation must be followed very strictly, in order to avoid problems with functioning and durability during the construction phase.

Before starting the heating phase, the drying of a heated subfloor has to be made by turning the heating on/off with a pause before installation of the floor, following a documented protocol.

The beginning of the heating phase in concrete subfloors is to be made **not before 21 days** after complete curing of the substrate. The heating phase has to begin with running temperature of **25°C (78°F)** during 3 days.

The subfloor should be in place and cured **for at least 60-90 days**.

The temperature should then be increased each day until the maximum temperature allowed according to the manufacturer system. This maximum value should be kept for at least 72 hours and maintained for 5-7 days without turning it off. The decrease of temperature is made by reducing it gradually every day until **18°C (65°F)** on the surface is achieved. During the installation, the temperature of the surface should not exceed **18°C (65°F)** and should be kept for 3 days after finishing the installation (for floors). Then the temperature should be increased slowly to a max. of **28°C (82°F)** on the subfloor surface.

Important notes:

- Failure to observe these precautions can cause a build-up of moisture or partial evaporation of the leveling compound or fast drying of adhesive.
- If the heat is turned on when the adhered material has not been conditioned properly on-site for at least 7 days and is not completely dry, the material may shrink. Avoid abruptly turning on radiant heat when cooler weather prevails as it will subject the flooring to rapid movement of expansion and or contraction. Gradually increase temperature regardless of the season.
- The adhesive used must be suitable for heated subfloors.
- All hot water pipes and electrical heating elements should be embedded in concrete in accordance with the appropriate building codes and regulations.
- For detailed information, follow the instructions supplied by the subfloor heating system manufacturer/contractor, or contact your supplier.

HOMOGENEOUS CORK TILE FLOORING: Install Guide

2. PRIOR TO INSTALLATION

Transportation

Transport and store the cartons horizontally.

Packed tiles and adhesive should be acclimatized at the job site in a dry, well-ventilated area **for a minimum of 48 hours** so that flooring may acclimate.

Remove tiles from packages just before start installation.

During storage and installation, maintain temperature and relative humidity to a level consistent with the conditions which will prevail when the building is occupied. In most cases, this means maintaining a temperature range from **18°C to 28°C (65°F to 82°F)** and relative humidity range from **35% to 65%**.

Site Inspection

Prior to installation, please inspect the tiles in daylight for any visible faults or damage, and also check if the subfloor and site conditions are in accordance with the specifications described within these instructions.

Allstate Rubber cannot be held responsible for claims associated with improper subfloors, improper applications, adhesives, varnishes and the use of maintenance products not recommended, or detectable defects verifiable prior to installation.

3. DURING INSTALLATION

Protection To Humidity

Despite its age, there is always a risk of moisture in subfloors, for that reason it is necessary to ensure that an efficient moisture/vapor barrier is installed.

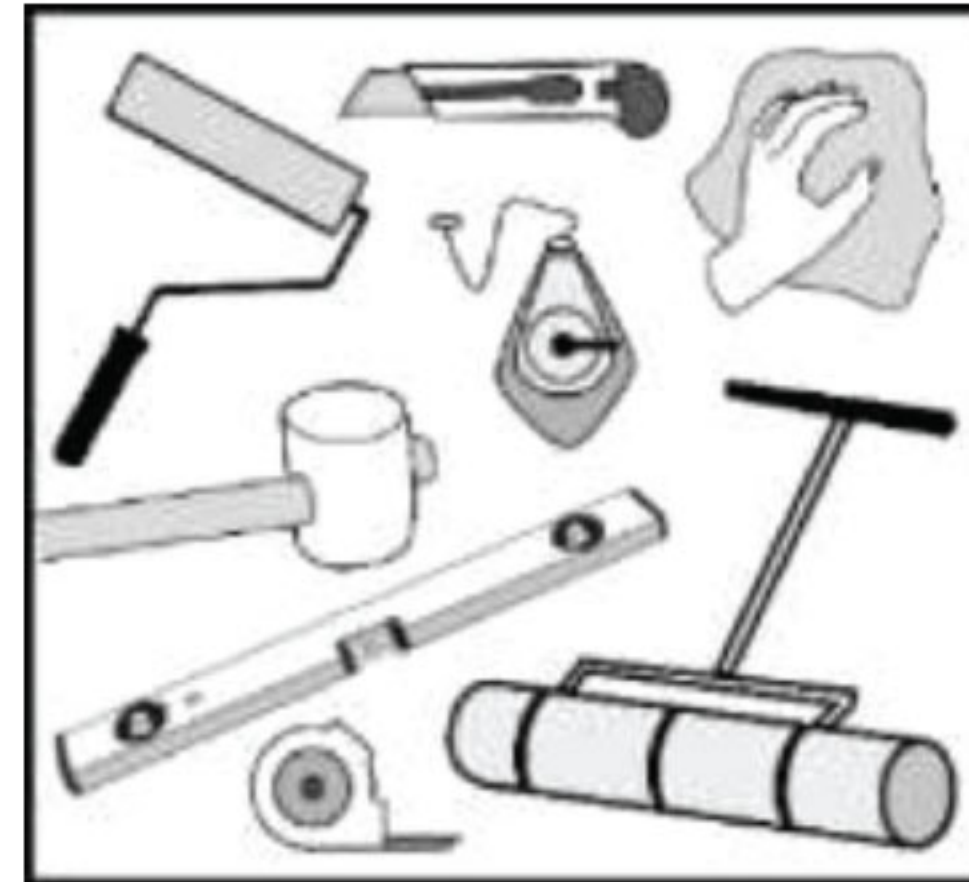
Subfloors must be permanently dry on concrete subfloors without radiant heat. Consider the maximum humidity less than 75% RH or conduct calcium chloride moisture tests to ensure that moisture emission levels are less than 3lbs/1000ft²/24 hours (USA and Canada), or CM Test:

Type of Subfloor	Moisture Content CM% Heated	Non Heated
Concrete	1.5	2.0
Anhydrite	0.3	0.5

HOMOGENEOUS CORK TILE FLOORING: Install Guide

Tools Required

- Mohair roller
- Tape measure
- Craft knife (sharp)
- Pencil
- Straight edge
- Chalk line
- Cloth
- Rubber hammer/mallet.



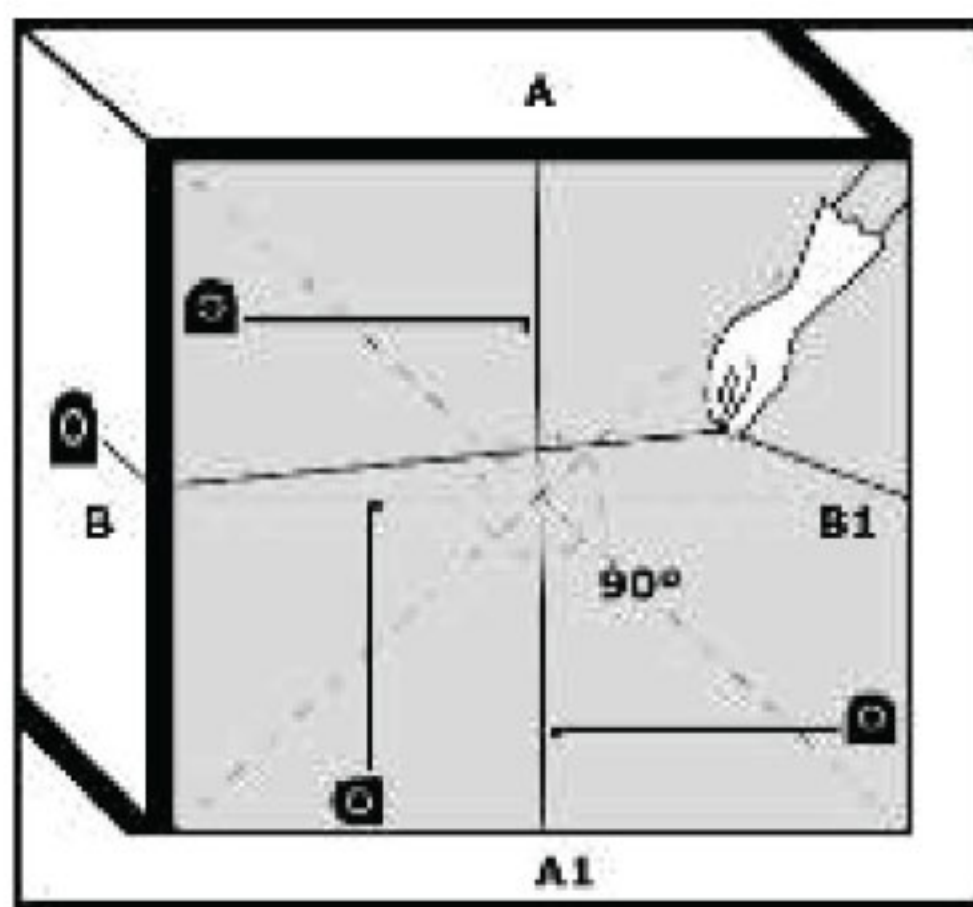
MEASUREMENTS:

Find the center of the room

using a chalk line, from the middle of wall A to the middle of wall A1, then make a line from the middle of wall B to the middle of wall B1; Check that the intersection of the two lines forms a 90° angle;

If laying in diagonal

mark two diagonal lines starting from the intersection point, dividing the 90° angle in half (forming like this a 45° angle).



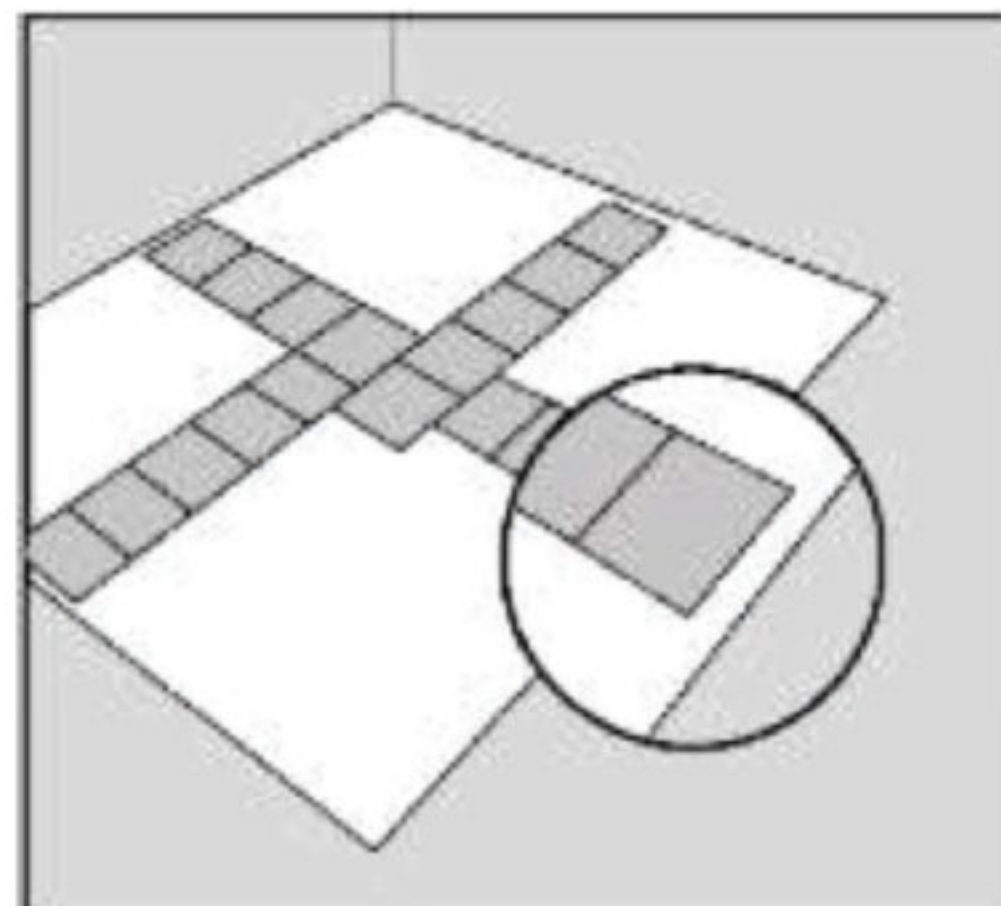
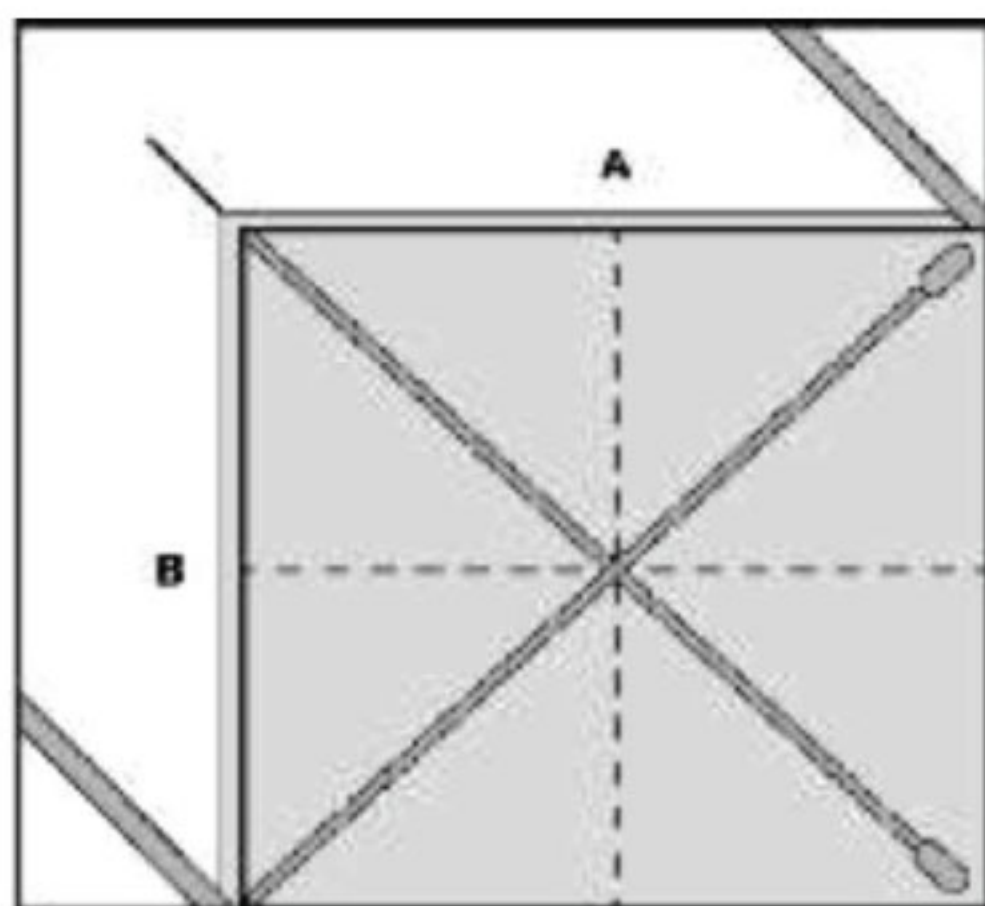
MEASUREMENTS CHECK:

Check the room dimensions

by measuring or placing the tiles (without gluing) from the middle;

Make sure that the widths of the tiles that will be near the wall are identical and greater than 5cm2 (2");

If necessary, repeat the previous step by drawing new parallel lines to the first ones.



allstaterubber.com

ALLSTATE RUBBER by Stoler Industries
2220 S Hamilton Extension Dalton, Georgia 30720
sales@allstaterubber.com



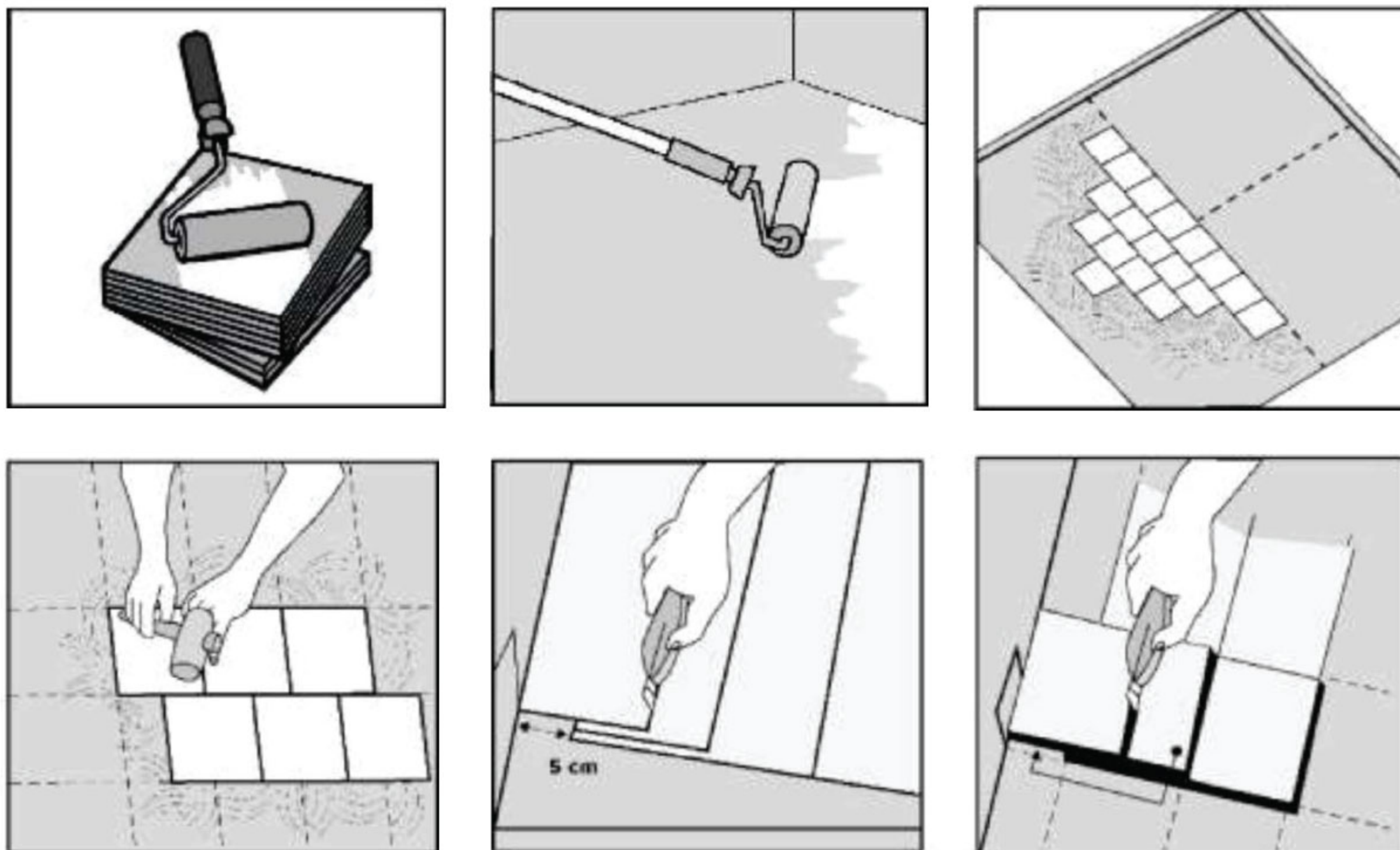
HOMOGENEOUS CORK TILE FLOORING: Install Guide

4. LAYING INSTRUCTIONS

Only use recommended adhesive

Apply adhesive using mohair roller – follow the instructions from the adhesive manufacturer.

Install the lines from the center along the marked line, preferably using “brick-bond” a.k.a. the ashlar system. Allstate **DOES NOT** suggest using the corner to corner method.



Laying:

Apply CL-Contact adhesive with a mohair short hair roller to the backing of cork tiles.

Apply the adhesive with a mohair roller to the subfloor. Coverage should be 150gr/m². Avoid pooling the adhesive.

Install the tiles from the center along the marked line preferably using “brick-bond” installation. Press each tile with the help of a rubber hammer or hand roller. Remove any excess adhesive with a damp cloth.

Cut the tiles near the wall as indicated.

HOMOGENEOUS CORK TILE FLOORING: Install Guide

NOTES

Like other natural product, the exposure to UV light as well as sunlight will cause color variations to cork. This is normal and should not be considered a manufacturing defect! Area rugs and large furniture will block light exposure and cause uneven coloration. To minimize, furnishings and floor coverings should be moved periodically. Covering large exposed windows will help as well.

Minor color differences may occur between samples, sample photographs and the floor purchased. Allstate recommends dry laying first and at the minimum viewing at least two boxes on the job site prior to approval and install.

To give greater resistance, Allstate recommends the application of an extra layer of finish. This will improve the sealing of joints and prevent water infiltration.

3.2024 IS